

## Light efficiency:

94 Lumen/Watt

## Color temperature:

2813 K

## Light quality:

CRI:94.5, R<sub>g</sub>:93.4, R<sub>f</sub>:97.8

P: 2 / V: - / F: 2

Output: 629 lm

Peak: 1028 cd

Power: 6.7 W

Voltage: 119 V

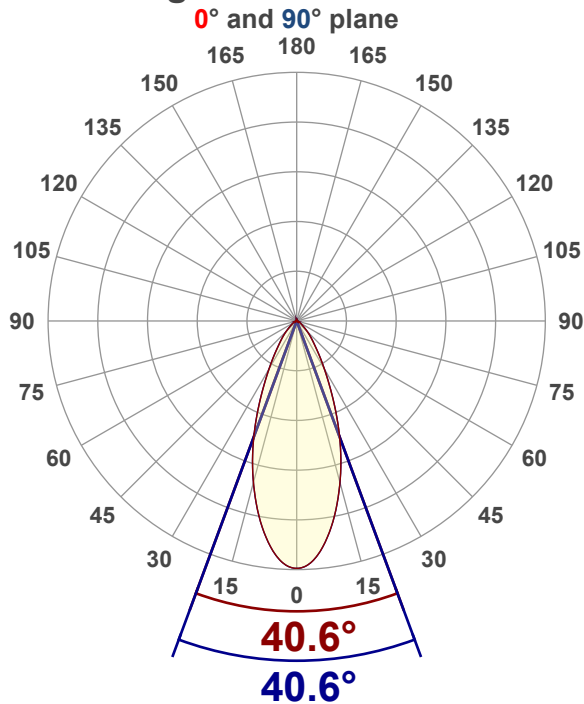
Current: 0.059 A

PF: 0.95

THD: 18.84 %



## Angular Distribution



Product name:

RA2-7F-90WH - 2700K

Test Date:

12/2/2025

Beam Angle (50% of the brightness of the centre):

40.6°

Field Angle (10% of the brightness of the centre):

78.4°

Cut Off Angle (2.5% of the brightness of the centre):

109.4°

## Beam Details

\*measured at centre of beam

Mounting Height (feet)\(meter)	Lux*	Footcandles*	Beam width (feet) / (meter)
4 ft / 1.2 m	692 lx	64 fc	3 ft / 0.9 m
8 ft / 2.4 m	173 lx	16 fc	5.9 ft / 1.8 m
12 ft / 3.7 m	77 lx	7 fc	8.9 ft / 2.7 m
16 ft / 4.9 m	43 lx	4 fc	11.8 ft / 3.6 m
20 ft / 6.1 m	28 lx	3 fc	14.8 ft / 4.5 m

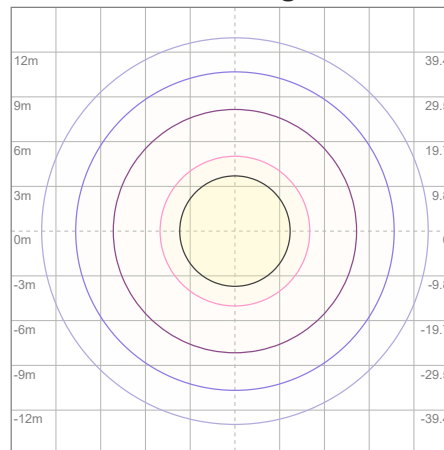
Beam center

# Photometric Testing Report

## Zonal Lumen Summary

Zone	Lumen	%Luminaire
0-30	445	70.75%
0-40	539	85.69%
0-60	611	97.14%
60-90	17.3	2.75%
70-100	5.87	0.93%
90-120	0.111	0.02%
0-90	628	99.84%
90-180	0.372	0.06%
0-180	629	100.00%

## ISO Lux Diagram



Lux at center:	111 lx
3%	3.33 lx
5%	5.55 lx
10%	11.10 lx
30%	33.30 lx
50%	55.50 lx

### Conditions:

Number of planes: 8

Lux distribution on a surface when lamp is mounted at 3.05 meters from the surface.

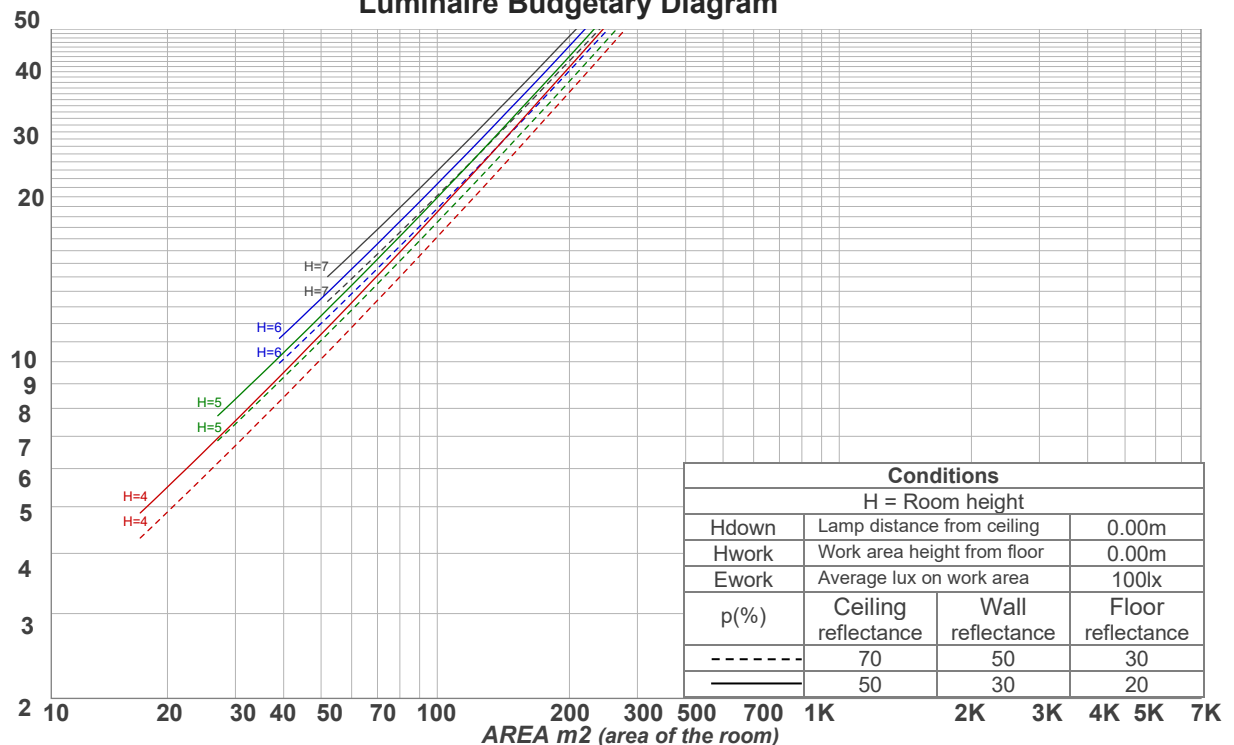
Mounting height: 3.05 meters (10 feet)

## Coefficients of Utilization

Ceiling reflectance	80				70				50			30			10			0
Wall reflectance	70	50	30	10	70	50	30	10	50	30	10	50	30	10	50	30	10	0
Floor reflectance	20	20	20	20	20	20	20	20	20	20	20	20	20	20	20	20	20	0
RCR	(RCR: Room Cavity Ratio) Room Values are expressed as percentage of Lumens delivered to the task surface																	
0	119	119	119	119	116	116	116	116	111	111	111	106	106	106	102	102	102	100
1	113	110	108	105	111	108	106	104	104	102	101	100	99	98	97	96	95	93
2	107	102	98	95	105	101	97	94	97	94	92	94	92	90	92	90	88	86
3	102	95	90	86	100	94	89	85	91	87	84	89	86	83	87	84	81	80
4	97	89	83	79	95	88	83	79	86	81	78	84	80	77	82	79	76	74
5	92	84	78	73	90	83	77	73	81	76	72	79	75	72	78	74	71	69
6	88	79	73	68	86	78	72	68	76	71	68	75	70	67	74	70	67	65
7	83	74	68	64	82	73	68	64	72	67	63	71	66	63	70	66	63	61
8	80	70	64	60	78	70	64	60	68	63	60	67	63	59	66	62	59	58
9	76	67	61	57	75	66	60	57	65	60	56	64	60	56	63	59	56	55
10	73	63	58	54	72	63	57	54	62	57	54	61	57	53	60	56	53	52

LAMPS (number of lamps)

## Luminaire Budgetary Diagram



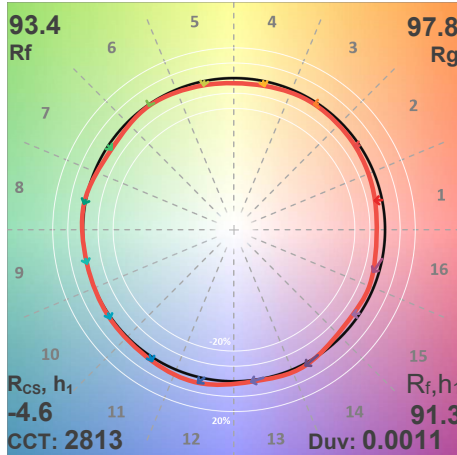
### Conditions

H = Room height

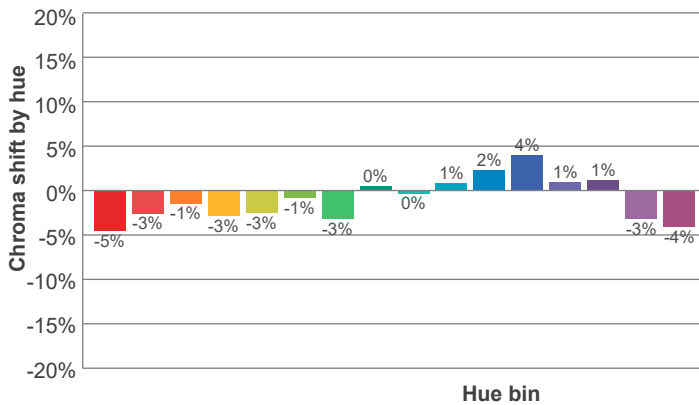
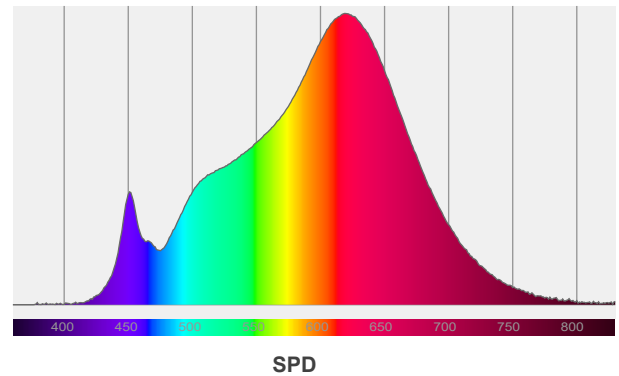
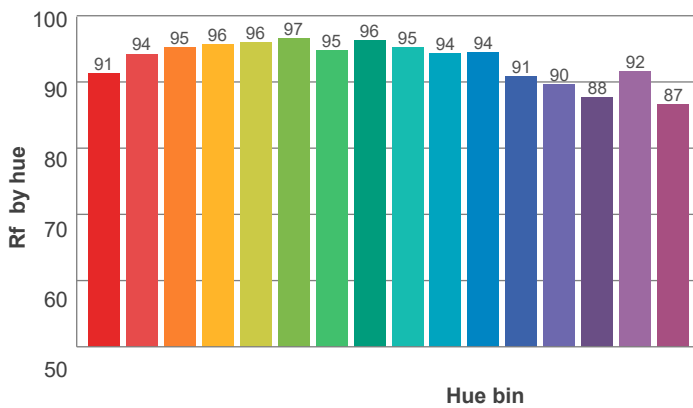
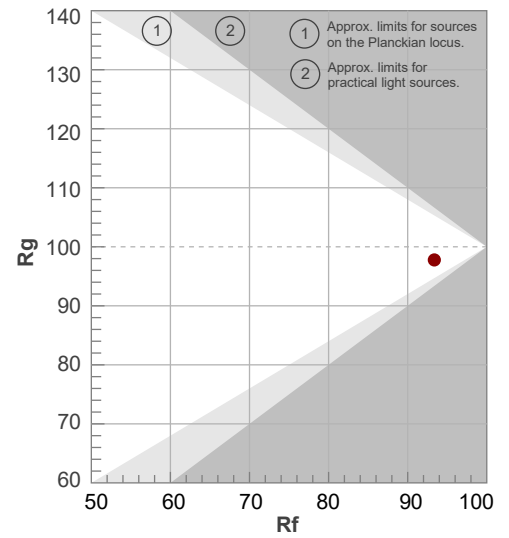
Hdown	Lamp distance from ceiling		0.00m
Hwork	Work area height from floor		0.00m
Ework	Average lux on work area		100lx
p(%)	Ceiling reflectance	Wall reflectance	Floor reflectance
-----	70	50	30
=====	50	30	20

ANSI/IES TM-30-18

P: 2 / V: - / F: 2



Hue Bin	R <sub>f</sub>	Shifts (%)	
		Chroma	Hue
1	91	-5%	1%
2	94	-3%	2%
3	95	-1%	2%
4	96	-3%	-1%
5	96	-3%	1%
6	97	-1%	1%
7	95	-3%	1%
8	96	0%	2%
9	95	0%	3%
10	94	1%	3%
11	94	2%	3%
12	91	4%	-3%
13	90	1%	-8%
14	88	1%	-10%
15	92	-3%	-3%
16	87	-4%	-9%



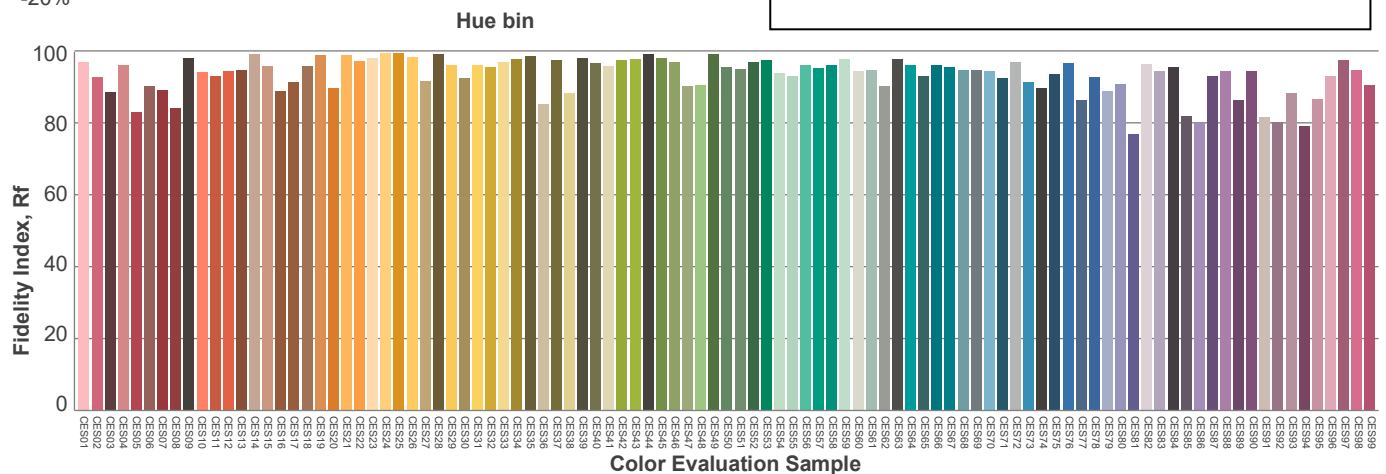
Red: 39%, Power=6.2mW

Blue: 7.5%, Power=2.7mW

Green: 24.1%, Power=7.1mW

UVA: 0%, Power=0.0mW

Dominant Wavelength: 584nm

1<sup>st</sup> Peak Wavelength: 619nm2<sup>nd</sup> Peak Wavelength: 451nm

### Glare Evaluation According to UGR

p Ceiling		70	70	50	50	30	70	70	50	50	30
p Walls		50	30	50	30	30	50	30	50	30	30
p Floor		20	20	20	20	20	20	20	20	20	20
Room size X      Y		Viewing direction at right angles to lamp axis					Viewing direction parallel to lamp axis				
2H	2H	22.4	23.1	22.5	23.3	23.5	22.4	23.1	22.5	23.3	23.5
	3H	22.4	23.2	22.8	23.4	23.6	22.4	23.2	22.8	23.4	23.6
	4H	22.5	23.2	22.9	23.5	23.7	22.5	23.2	22.9	23.5	23.7
	6H	22.6	23.2	22.9	23.5	23.9	22.6	23.2	22.9	23.5	23.9
	8H	22.6	23.2	22.9	23.5	23.9	22.6	23.2	22.9	23.5	23.9
	12H	22.5	23.1	22.9	23.5	23.9	22.5	23.1	22.9	23.5	23.9
4H	2H	22.3	23.1	22.7	23.3	23.5	22.3	23.1	22.7	23.3	23.5
	3H	22.6	23.2	23.0	23.6	24.0	22.6	23.2	23.0	23.6	24.0
	4H	22.6	23.2	23.1	23.6	24.1	22.6	23.2	23.1	23.6	24.1
	6H	22.7	23.3	23.2	23.6	24.0	22.7	23.3	23.2	23.6	24.0
	8H	22.7	23.3	23.2	23.6	24.0	22.7	23.3	23.2	23.6	24.0
	12H	22.7	23.1	23.2	23.5	24.0	22.7	23.1	23.2	23.5	24.0
8H	4H	22.6	23.1	23.1	23.5	23.8	22.6	23.1	23.1	23.5	23.8
	6H	22.8	23.1	23.3	23.6	24.1	22.8	23.1	23.3	23.6	24.1
	8H	22.8	23.1	23.3	23.6	24.3	22.8	23.1	23.3	23.6	24.3
	12H	22.8	23.1	23.4	23.6	24.2	22.8	23.1	23.4	23.6	24.2
12H	4H	22.6	23.0	23.1	23.4	23.9	22.6	23.0	23.1	23.4	23.9
	6H	22.8	23.1	23.3	23.6	24.2	22.8	23.1	23.3	23.6	24.2
	8H	22.8	23.1	23.4	23.6	24.2	22.8	23.1	23.4	23.6	24.2
Variation of the observer position for the luminaire distance S											
S = 1.0H		1.9 / -1.8					1.9 / -1.8				
S = 1.5H		3.8 / -2.6					3.8 / -2.6				
S = 2.0H		5.4 / -3.8					5.4 / -3.8				
Standard table		n/a					n/a				
Correction summand		n/a					n/a				
Corrected glare indices referring to 629 lm total luminous flux											